

The background features abstract, overlapping green geometric shapes, primarily triangles and polygons, in various shades of green, creating a modern and dynamic feel.

Welcome to the Lynden Gardens Block Plan Public Information Centre

Where is Lynden Gardens?

Lynden Gardens is located north of Lynden Road. The lands are bordered by the City's Settlement Area Boundary to the north, the City's previous boundary to the west, and the Canadian National Railway to the east. Lynden Gardens has an area of approximately 78 hectares.



Planning Study Submission

Welton and Innes GP Inc. has submitted the Block Plan for Lynden Gardens to the City of Brantford for review and comment. Lynden Gardens is a community that is part of the City of Brantford's Settlement Area expansion lands.

What is a Block Plan Study?

The Block Plan is a non-statutory document and consists of a Conceptual Master Plan, which graphically demonstrates the public and private elements of the Block Plan area, together with supporting text which explains the planning rationale for the various elements of the Conceptual Master Plan.

The Block Plan is based on the results of detailed technical studies including an Environmental Impact Study, Servicing Study, and Transportation Impact Study, which provide in-depth analysis to inform the policies and plans.

Block Plan Vision and Purpose

Vision

A complete community that is inclusive, accessible, compact and well connected for all modes of travel

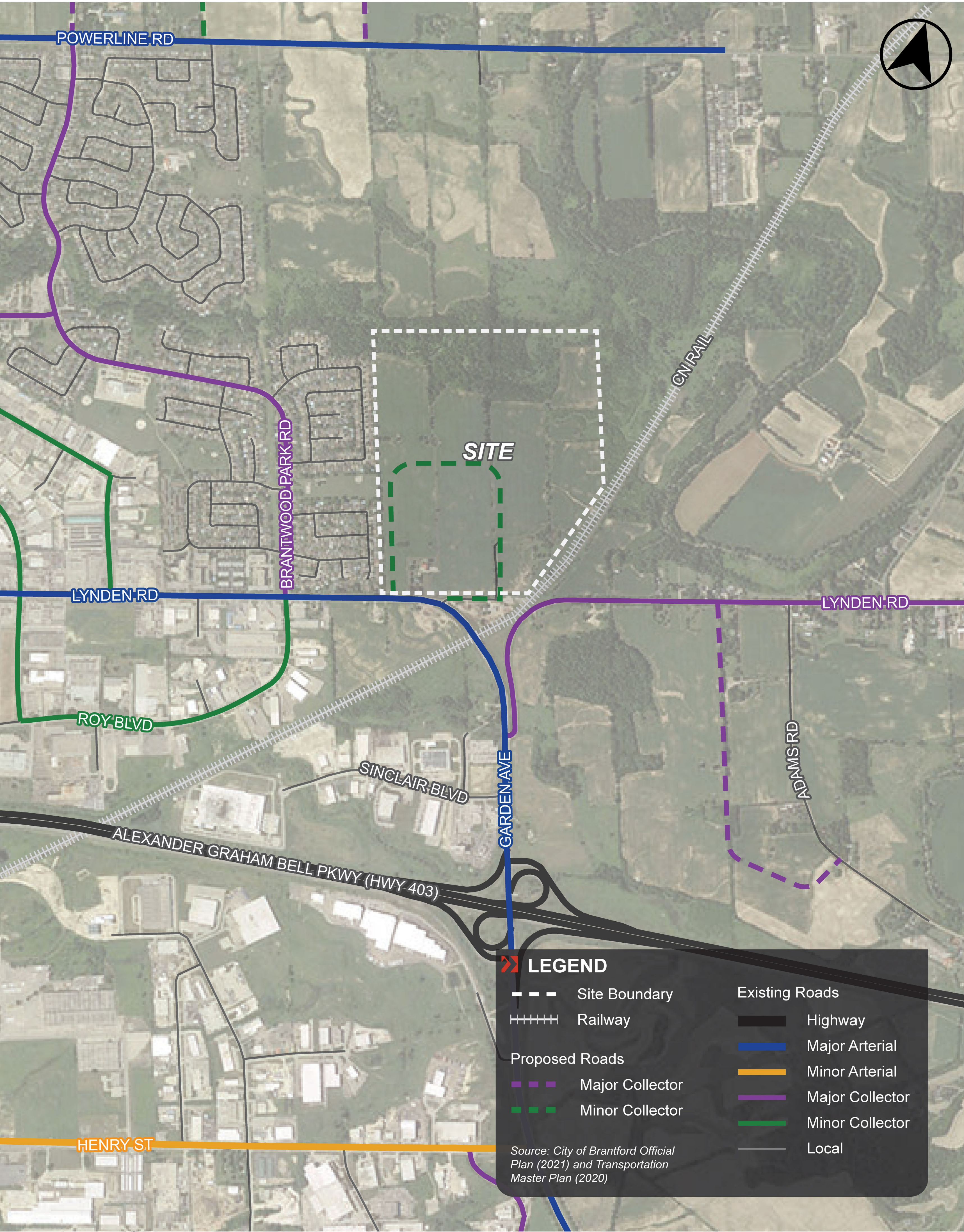
Purpose

- ▶ Identify detailed land use and density distribution
- ▶ Confirm boundaries of Natural Heritage System
- ▶ Identify parkland system, community facilities and active transportation network
- ▶ Identify detailed road pattern, including local roads
- ▶ Articulate details of water, sewer and stormwater management systems
- ▶ Identify connections to adjacent lands
- ▶ Form the basis for landowners financial agreement

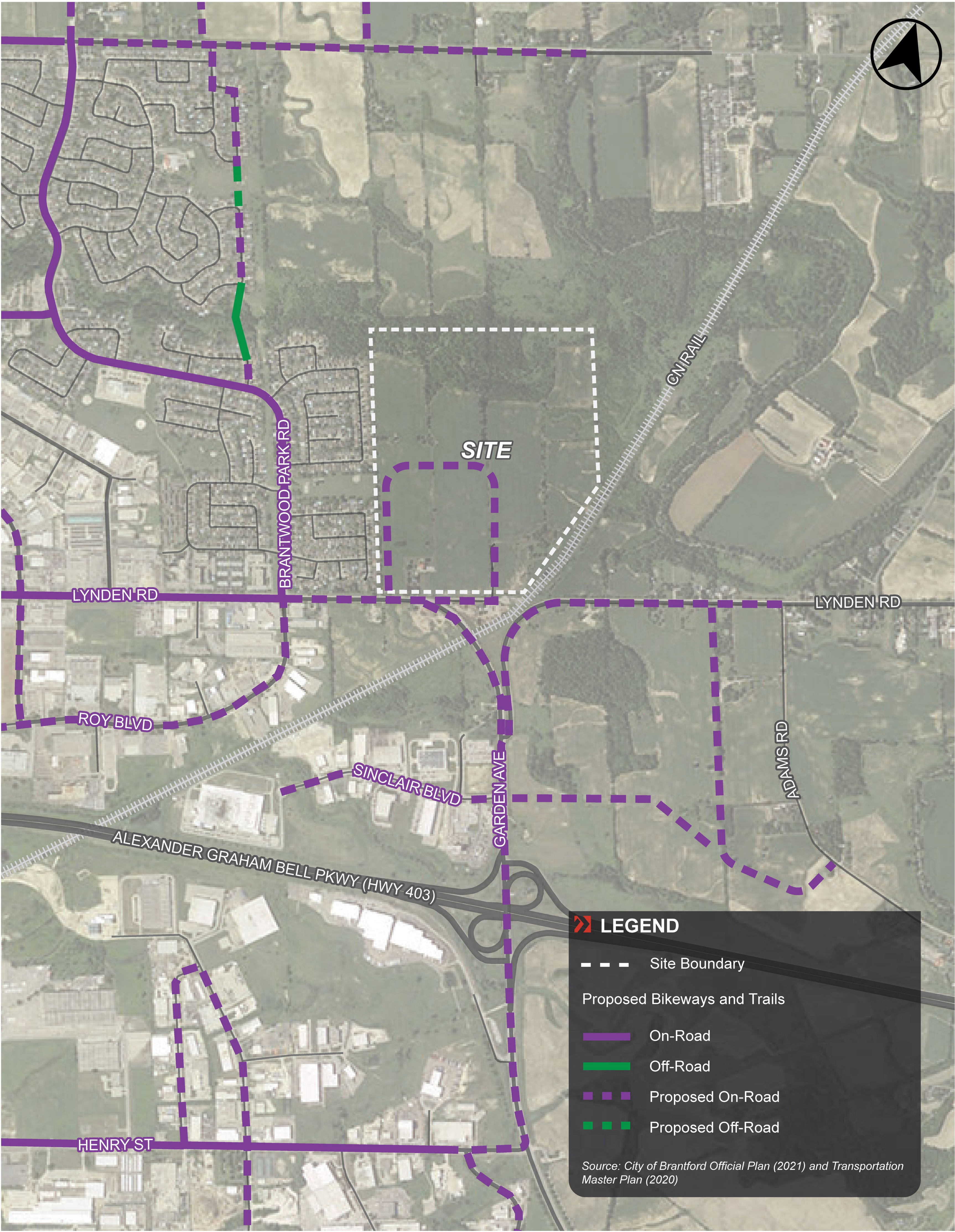
L-P-[bioRxiv preprint doi: <https://doi.org/10.1101/1454>; this version posted January 20, 2017. The copyright holder for this preprint \(which was not certified by peer review\) is the author/funder, who has granted bioRxiv a license to display the preprint in perpetuity. It is made available under aCC-BY-NC-ND 4.0 International license.](#)



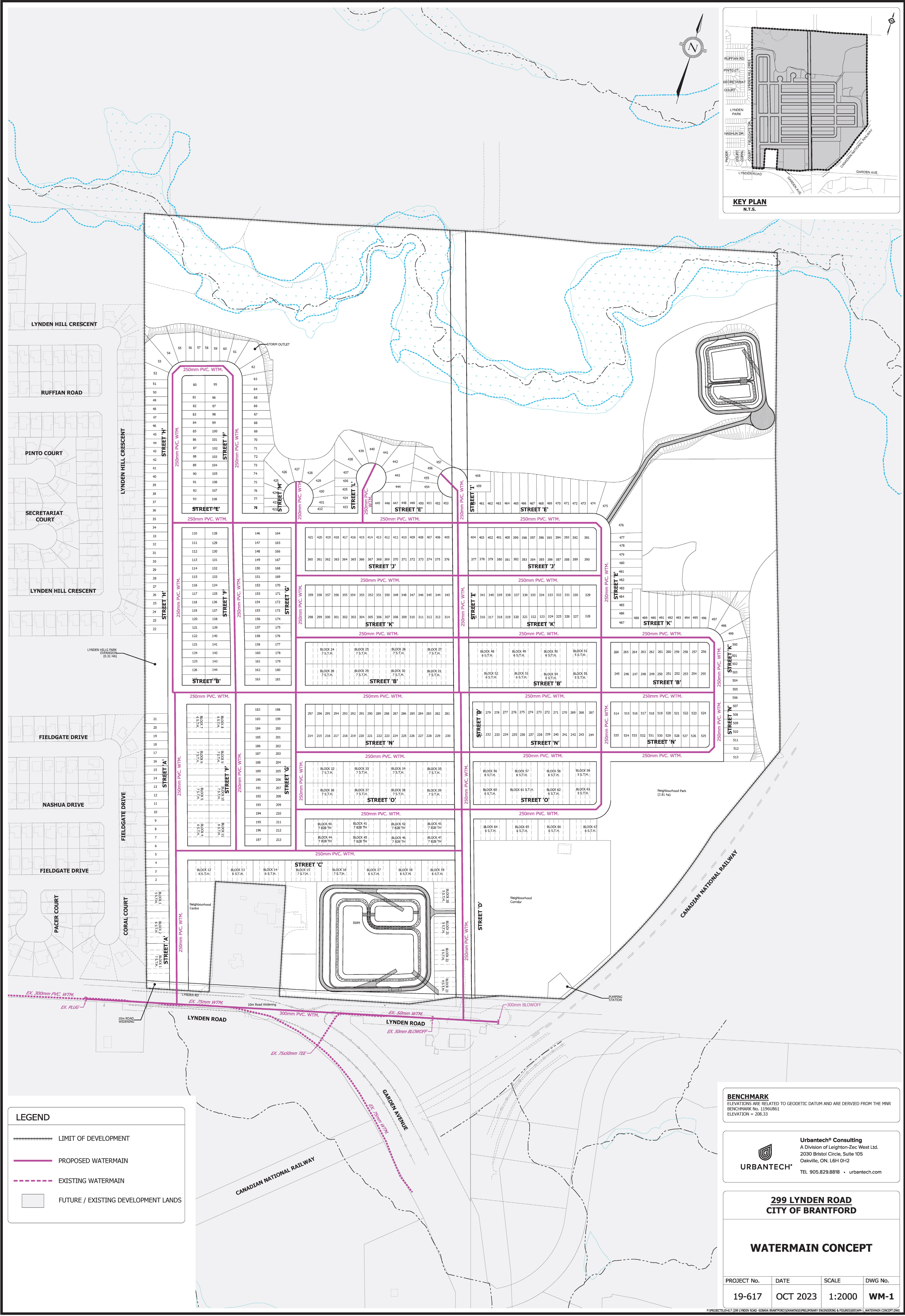
Road System



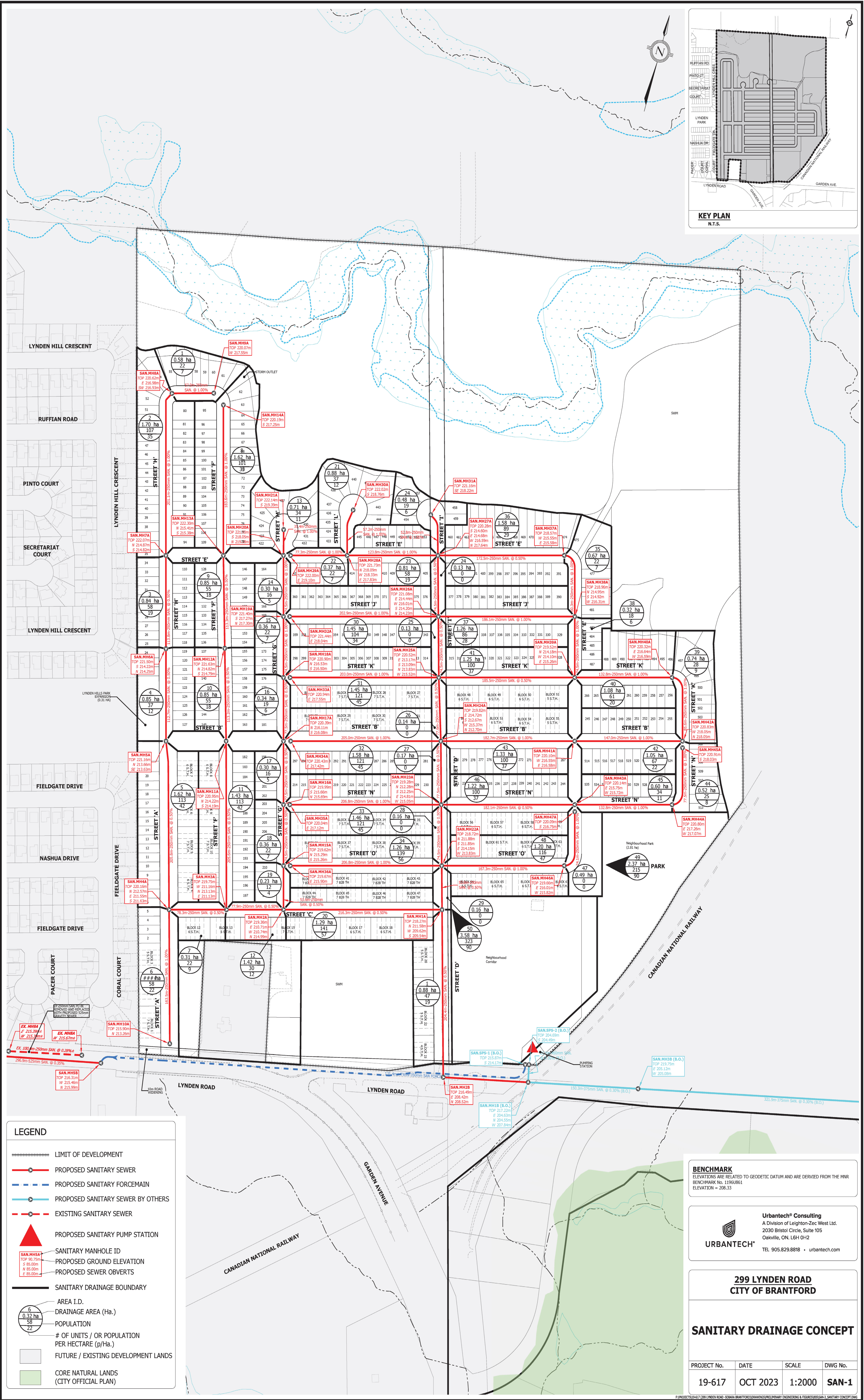
Active Transportation System



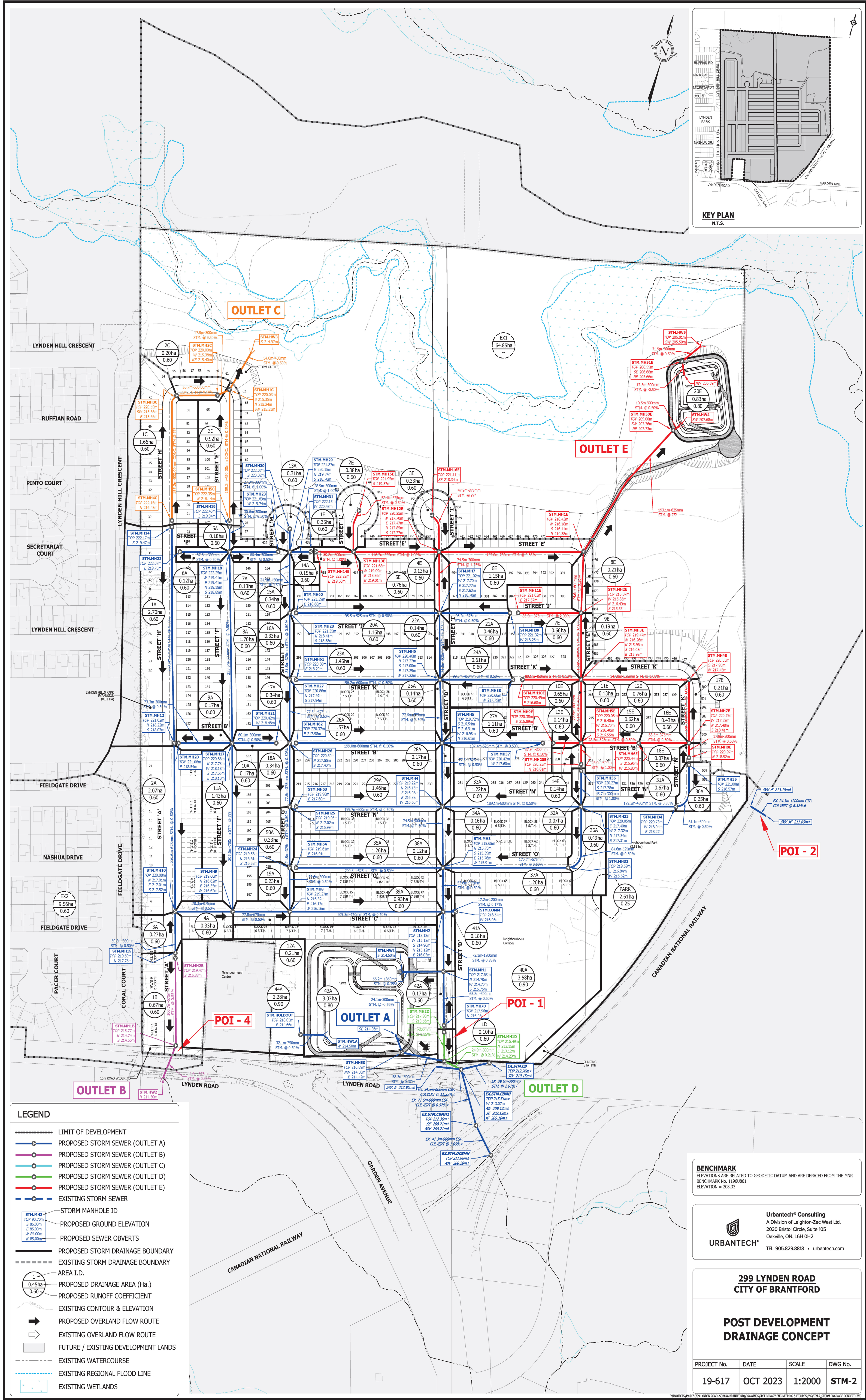
Water System



Sanitary Servicing Plan



Drainage System



How can you stay informed and involved?

For more information on the Block Plan Study, visit the website:
www.lyndengardenblockplan.ca

Questions and comments are welcome and may be submitted through the website or by completing a comment sheet available this evening.